



STEWARDING NATIVE LANDS PRESENTS

BRING BACK THE NATIVE

A TRIBAL LANDS
CONSERVATION
FUND CAMPAIGN

NOVEMBER 12, 2024

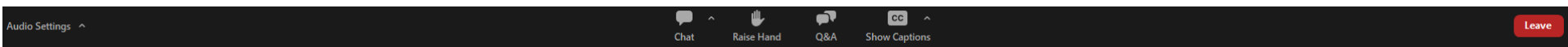


WEBINAR MANAGEMENT

All attendees will be muted throughout this webinar.



If you have questions, please type them in the question box. They will be addressed during the Questions section.



This webinar is being recorded.

STEWARDING NATIVE LANDS



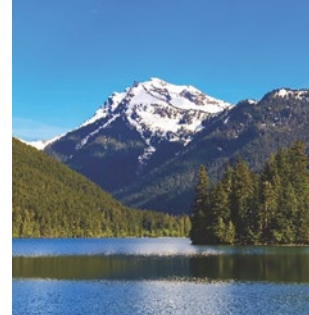
ENVIRONMENTAL SOVEREIGNTY & JUSTICE

Protecting communities and lands from harmful practices, projects, and policies



STEWARDSHIP

Sustainably managing and restoring lands for our communities and future generations



CLIMATE

Addressing ongoing and anticipated impacts of climate change to preserve lands and cultural lifeways



COMMUNITY PATHWAYS

Upholding traditional knowledge systems

TLC FUND

- The Tribal Lands Conservation (TLC) Fund is an opportunity to amplify Native voices
- Native-led initiatives have historically been and continue to be underfunded
- Supporting Native people in protecting and stewarding Native species will in turn protect our lands, waters, and ecosystems

PRESENTERS



JARROD CROW
NEZ PERCE TRIBE



BRYANT WAUPOOSE
MEDICINE FISH



NAIAD.org

Dave Herasimtschuk © FI

PACIFIC LAMPREY

Jarrold Crow- Nez Perce
Tribe





Elmer Crow

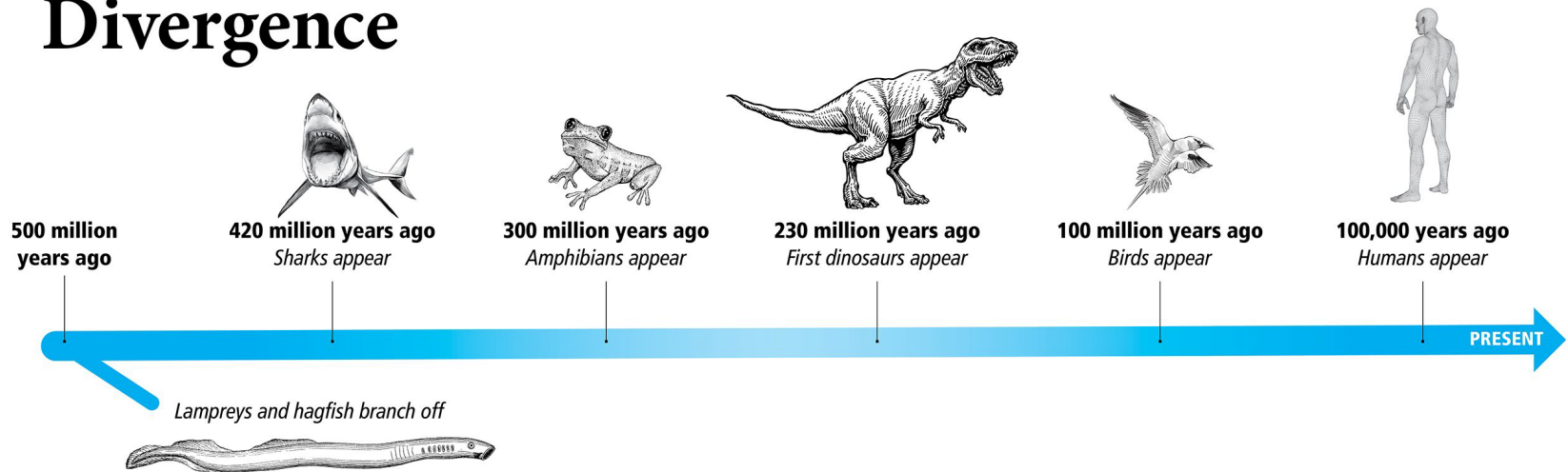
Brother Eel



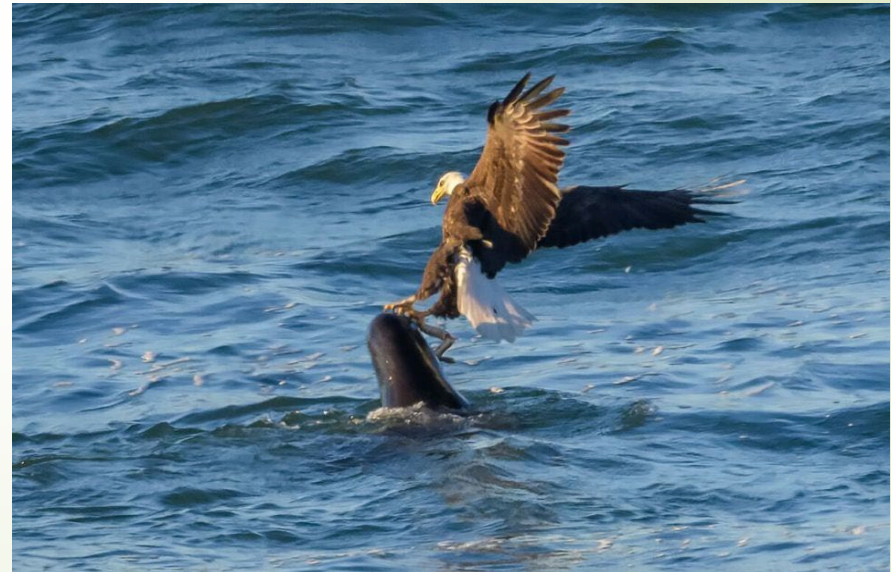
Why are Pacific Lamprey important?

Historically

Divergence



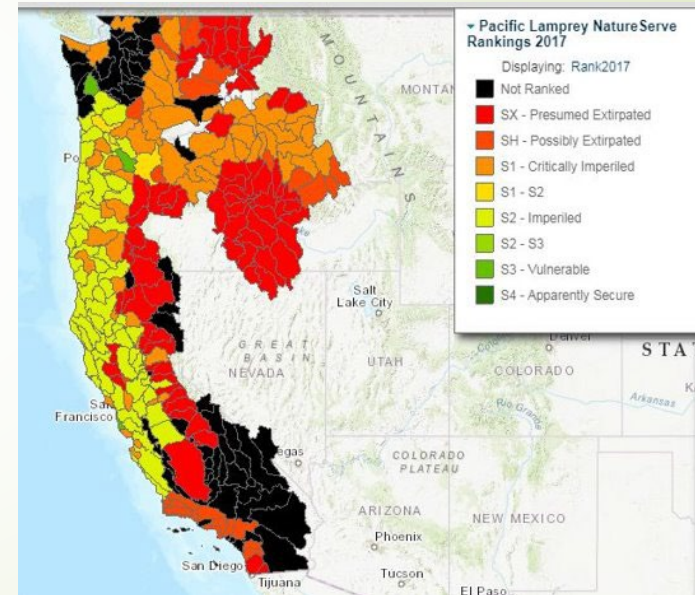
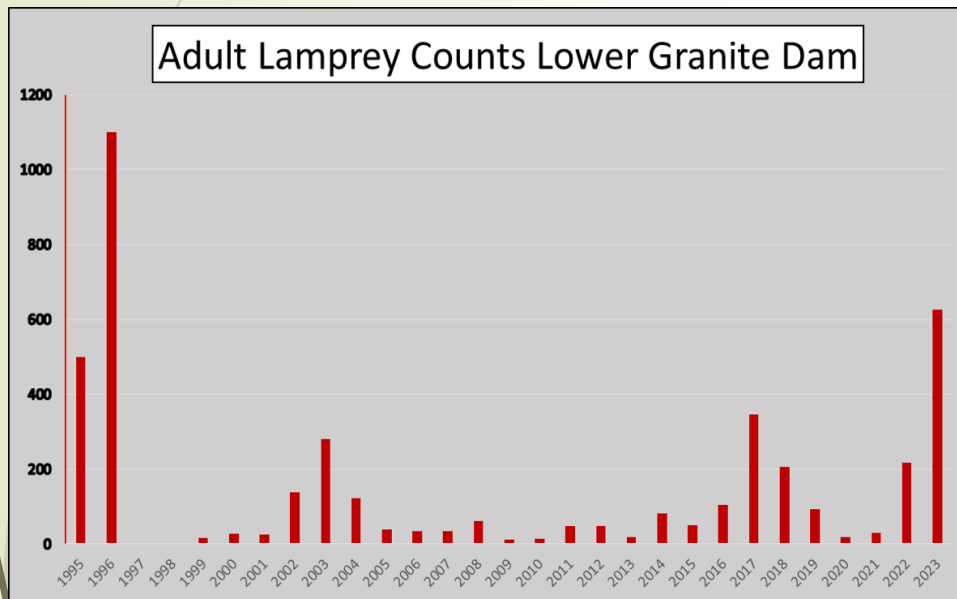
Ecologically



Culturally



Why do we need to do something?





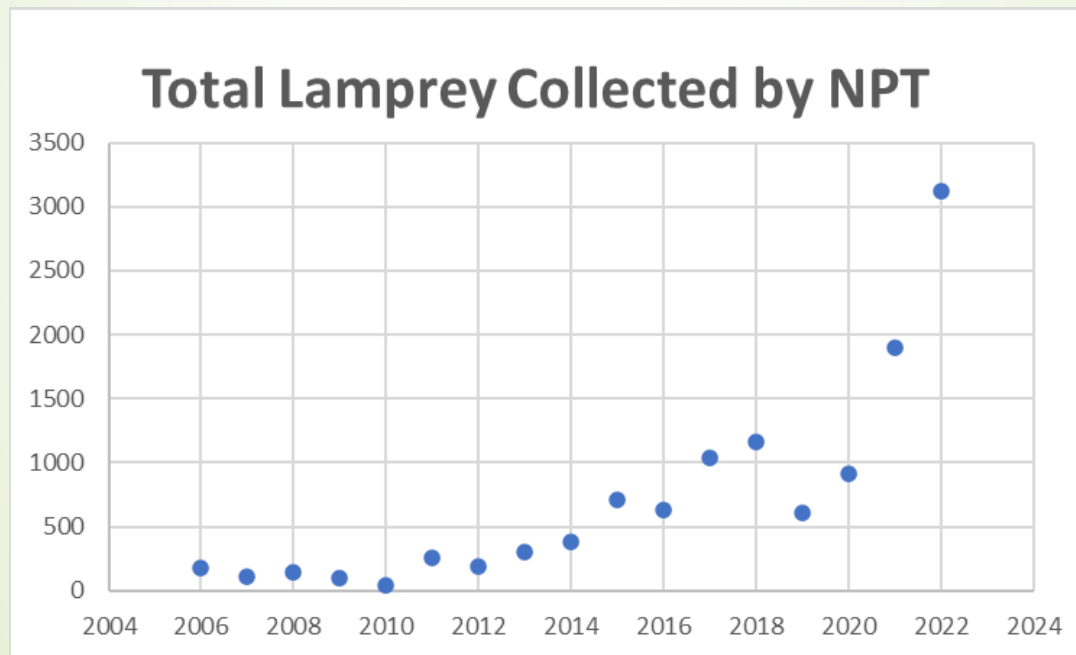
Translocation Process

- Adults are collected during the summer at Bonneville, The Dalles, and John Day Dams
- Fish are then transported to a holding facility at Nez Perce Tribal Hatchery
- Adults are held over winter and released during the spring (April-June) but in 2018 we began a new strategy: Direct Release
- Follow up monitoring is conducted via incidental screw trap collections, electro-fishing, and genetic parentage analysis.

Translocation



Translocated Lamprey NPT



What is the problem?



Obstacles



Education and Outreach



END GOAL

Over 2 Million adult Pacific Lamprey entered the Columbia system above the Bonneville Dam site

Today there are only about 20,000 adults that make it to Bonneville



Contact information:

Jarrold Crow

jarrodc@nezperce.org

208-791-4082



WAYS TO SUPPORT

SHARE INFORMATION ABOUT THE TLC FUND ON YOUR SOCIAL MEDIA

TELL YOUR FRIENDS, FAMILY, AND COLLEAGUES ABOUT THE WORK FIRST NATIONS IS SUPPORTING

DONATE DIRECTLY TO THE TLC FUND – ALL GIFTS WILL BE MATCHED, UP TO \$200,000



FOLLOW US ON SOCIAL MEDIA

 fndi303

 First Nations Development Institute

 FirstNationsDevelopmentInstitute

 @FNDI303



TLC
FUND

A stylized sunburst graphic with a central orange circle and radiating lines in alternating shades of orange and light orange. The lines are dark teal outlines.

[HTTPS://WWW.FIRSTNATIONS.ORG/BRINGBACK/](https://www.firstnations.org/bringback/)

CONTACT

- MARY ADELZADEH
madelzadeh@firstnations.org
- JONA CHARETTE
jcharette@firstnations.org

THANK YOU

TRIBAL  **LANDS**
CONSERVATION FUND

NATIONAL HEADQUARTERS

First Nations Development Institute
2432 Main Street
Longmont, CO 80501

CONTACT

Tel: 303.774.7836
Fax: 303.774.7841
info@firstnations.org

CONNECT

 firstnations.org
 [fndi303](https://www.instagram.com/fndi303)
 First Nations Development Institute
 [FirstNationsDevelopmentInstitute](https://www.facebook.com/FirstNationsDevelopmentInstitute)
 [@FNDI303](https://twitter.com/FNDI303)